

STATE OF HAWAII
DEPARTMENT OF TRANSPORTATION
HIGHWAYS DIVISION

ADDENDUM NO. 3

for

**NIMITZ HIGHWAY AND ALA MOANA BOULEVARD RESURFACING,
SAND ISLAND ACCESS ROAD TO VICINITY OF PIIKOI STREET**

FEDERAL AID PROJECT NO. NH-092-1(030)

The following amendments shall be made to the Bid Documents:

A. SPECIAL PROVISIONS

1. Replace Special Provision 638 – Portland Cement Concrete Curb and Gutter dated 1/21/21 with the attached Special Provision 638 – Portland Cement Concrete Curb and Gutter dated r3/9/21.

B. PROPOSAL SCHEDULE

1. Replace Proposal Schedule pages P-8 to P-13 dated r2/16/2021 with the attached revised Proposal Schedule pages P-8 to P-13 dated r3/9/2021. Revised item 623.7051 Approx. Quantity from 129 to 105, added Force Account item 638.2000 - Maintenance of Overlaid Gutter, and revised item 694.0100 Approx. Quantity from 7 to 10.

C. FEDERAL WAGE RATES

1. Replace Federal Wage Rates dated 01/22/2021 with the attached Federal Wage Rates dated 02/19/2021.

D. PLANS

1. Replace Plan Sheets 41 and 46 with the attached Plan Sheets ADD. 41 and ADD. 46.

The following is provided for information.

E. ANSWERS TO QUESTIONS FROM PROSPECTIVE BIDDERS

1. Attached are RFIs and responses for your information.

Please acknowledge receipt of this Addendum No. 3 by recording the date of its receipt in the space provided on page P-4 of the Proposal.



JADE T. BUTAY
Director of Transportation

PROPOSAL SCHEDULE

ITEM NO.	ITEM	APPROX. QUANTITY	UNIT	UNIT PRICE	AMOUNT
202.1000	Removal of Existing Curb Ramp	2	EACH	\$ _____	\$ _____
209.1000	Installation, Maintenance, Monitoring, and Removal of BMP	L.S.	L.S.	L.S.	\$ _____
209.2000	Additional Water Pollution, Dust, and Erosion Control	F.A.	F.A.	F.A.	\$ <u>150,000.00</u>
209.3000	Hazardous Materials Mitigation	F.A.	F.A.	F.A.	\$ <u>100,000.00</u>
301.1000	Hot Mix Asphalt Base Course (with Polymer Modified Asphalt)	9,970	Tons	\$ _____	\$ _____
401.0100	HMA Pavement, Mix No. V Leveling	200	Tons	\$ _____	\$ _____
401.1000	2 Inch PMA Pavement	17,210	Tons	\$ _____	\$ _____
401.2000	Pavement Smoothness Incentive	Allowance	Allowance	Allowance	\$ <u>77,445.00</u>
414.1000	Excavation of Weakened Pavement Areas	4,740	C.Y.	\$ _____	\$ _____
415.1000	2 Inch Cold Planing	151,700	S.Y.	\$ _____	\$ _____
415.2000	Planing Pavement Profile	F.A.	F.A.	F.A.	\$ <u>189,625.00</u>
604.1000	Adjusting Storm Drain Manhole Frame and Cover	27	Each	\$ _____	\$ _____
604.2000	Adjusting HECO Manhole Frame and Cover	10	Each	\$ _____	\$ _____
604.3000	Adjusting HTCO Manhole Frame and Cover	16	Each	\$ _____	\$ _____

PROPOSAL SCHEDULE

ITEM NO.	ITEM	APPROX. QUANTITY	UNIT	UNIT PRICE	AMOUNT
613.1000	Adjusting Centerline and Reference Survey Monuments	9	Each	\$ _____	\$ _____
621.1000	Restore TCS 228	L.S.	L.S.	L.S.	\$ _____
621.2000	Restore TCS 438	L.S.	L.S.	L.S.	\$ _____
623.3060	Traffic Signal Assembly (One-Way, 12-Inch, 1-3 Section Vertical with Mast-Arm Mounting) with LED Signal Lights	50	Each	\$ _____	\$ _____
623.3062	Traffic Signal Assembly (Two-Way, 12-Inch, 1-3 Section Vertical Programmable Visibility Head with Mast-Arm Mounting) with LED Signal Lights	20	Each	\$ _____	\$ _____
623.3900	Approach-Only Microwave Vehicle Detector	16	Each	\$ _____	\$ _____
623.4001	Traffic Signal Back Plate (Louvered, Black with Border)	70	Each	\$ _____	\$ _____
623.7051	Loop Detector Sensing Unit (6 Ft. x 6 Ft.) One Loop	105	Each	\$ _____	\$ _____
623.7052	Loop Detector Sensing Unit (6 Ft. x 6 Ft.) Two Loop	71	Each	\$ _____	\$ _____
623.7054	Loop Detector Sensing Unit (6 Ft. x 6 Ft.) Four Loop	21	Each	\$ _____	\$ _____
623.7055	Loop Detector Sensing Unit (6 Ft. x 6 Ft.) Five Loop	2	Each	\$ _____	\$ _____
623.7056	Loop Detector Sensing Unit (6 Ft. x 6 Ft.) Six Loop	22	Each	\$ _____	\$ _____
623.7057	Loop Detector Sensing Unit (6 Ft. x 6 Ft.) Eight Loop	2	Each	\$ _____	\$ _____

PROPOSAL SCHEDULE

ITEM NO.	ITEM	APPROX. QUANTITY	UNIT	UNIT PRICE	AMOUNT
626.1000	Adjusting Water Manhole Frame and Cover	64	Each	\$ _____	\$ _____
626.1100	Adjusting Water Valve Box Frame and Cover	58	Each	\$ _____	\$ _____
626.2000	Adjusting Sewer Manhole Frame and Cover	81	Each	\$ _____	\$ _____
627.1000	Endangered Species Survey	F.A.	F.A.	F.A.	\$ <u>5,000.00</u>
629.1010	Double 4-Inch Pavement Striping (Thermoplastic Extrusion)	6,292	LF	\$ _____	\$ _____
629.1011	4-Inch Pavement Striping (Thermoplastic Extrusion)	3,845	LF	\$ _____	\$ _____
629.1012	4-Inch Pavement Striping – Guide Line (Thermoplastic Extrusion)	9,724	LF	\$ _____	\$ _____
629.1013	6-Inch Pavement Striping (Thermoplastic Extrusion)	46,176	LF	\$ _____	\$ _____
629.1014	6-Inch Pavement Striping – Guide Line (Thermoplastic Extrusion)	3,938	LF	\$ _____	\$ _____
629.1015	8-Inch Pavement Striping (Thermoplastic Extrusion)	17,207	LF	\$ _____	\$ _____
629.1016	8-Inch Pavement Striping – Guide Line (Thermoplastic Extrusion)	429	LF	\$ _____	\$ _____
629.1017	8-Inch Pavement Striping – Lane Drop (Thermoplastic Extrusion)	550	LF	\$ _____	\$ _____
629.1018	12-Inch Pavement Striping – Diagonal (Thermoplastic Extrusion)	2,415	LF	\$ _____	\$ _____

PROPOSAL SCHEDULE

ITEM NO.	ITEM	APPROX. QUANTITY	UNIT	UNIT PRICE	AMOUNT
629.2010	12-Inch Stop Bar (Thermoplastic Extrusion)	2,383	LF	\$ _____	\$ _____
629.2012	4-Inch Lane Striping (10-Foot Profiled Thermoplastic Extrusion)	54,819	LF	\$ _____	\$ _____
629.3010	Crosswalk Marking (10 Feet) (Thermoplastic Extrusion)	362	Lane	\$ _____	\$ _____
629.3013	Pavement Arrow (Thermoplastic Extrusion)	256	Each	\$ _____	\$ _____
629.3014	Pavement Word (Thermoplastic Extrusion)	42	Each	\$ _____	\$ _____
629.3015	Pavement Symbol – Yield Line (Thermoplastic Extrusion)	11	Each	\$ _____	\$ _____
629.3016	Pavement Symbol – Diamond (Thermoplastic Extrusion)	14	Each	\$ _____	\$ _____
629.3017	Pavement Symbol – Bike Lane (Thermoplastic Extrusion)	40	Each	\$ _____	\$ _____
629.4010	Type “C” Pavement Marker	2,988	Each	\$ _____	\$ _____
629.4011	Type “D” Pavement Marker	148	Each	\$ _____	\$ _____
629.4012	Type “F” Pavement Marker	132	Each	\$ _____	\$ _____
629.4013	Type “H” Pavement Marker	802	Each	\$ _____	\$ _____
629.4014	Type “J” Pavement Marker	873	Each	\$ _____	\$ _____
629.5010	Tubular Delineator (28-Inch High)	17	Each	\$ _____	\$ _____

PROPOSAL SCHEDULE

ITEM NO.	ITEM	APPROX. QUANTITY	UNIT	UNIT PRICE	AMOUNT
631.1010	Regulatory Sign (10 Square Feet or Less)	7	Each	\$ _____	\$ _____
631.1020	Regulatory Sign (10 Square Feet or Less) with Post(s)	15	Each	\$ _____	\$ _____
631.2010	Warning Sign (10 Square Feet or Less)	18	Each	\$ _____	\$ _____
631.2020	Warning Sign (10 Square Feet or Less) with Post(s)	18	Each	\$ _____	\$ _____
631.4010	Removal of Existing Sign	9	Each	\$ _____	\$ _____
631.4020	Removal of Existing Sign and Post(s)	2	Each	\$ _____	\$ _____
631.5010	Anchor Base for Portable Contra-Flow Sign	44	Each	\$ _____	\$ _____
634.1000	Portland Cement Concrete Sidewalk	20	SY	\$ _____	\$ _____
636.1000	E-Construction License	F.A.	F.A.	F.A.	\$ <u>150,500.00</u>
638.1000	Curb, Type 2D	30	L.F.	\$ _____	\$ _____
638.2000	Maintenance of Overlaid Gutter	F.A.	F.A.	F.A.	\$ <u>100,000.00</u>
643.1000	Maintenance of Existing Landscape Areas	F.A.	F.A.	F.A.	\$ <u>50,000.00</u>
645.0100	Traffic Control	L.S.	L.S.	L.S.	\$ _____
645.0200	Additional Police Officers, Additional Control Devices, and Advertisement	F.A.	F.A.	F.A.	\$ <u>345,000.00</u>

PROPOSAL SCHEDULE

ITEM NO.	ITEM	APPROX. QUANTITY	UNIT	UNIT PRICE	AMOUNT
648.0100	Field-Posted Drawings	L.S.	L.S.	L.S.	\$ _____
694.0100	Longitudinal Channelizing Curb System	10	Unit	\$ _____	\$ _____
696.1000	Maintenance of Trailers	F.A.	F.A.	F.A.	\$ <u>50,000.00</u>
699.1000	Mobilization (Not to Exceed 6 Percent of the Sum of All Items Excluding the Bid Price of this Item)	L.S.	L.S.	L.S.	\$ _____
Sum of All Items					\$ _____
NOTE: Bidders must complete all unit prices and amounts. Failure to do so may be grounds for rejection of bid.					

"General Decision Number: HI20210001 02/19/2021

Superseded General Decision Number: HI20200001

State: Hawaii

Construction Types: Building, Heavy (Heavy and Dredging), Highway and Residential

Counties: Hawaii Statewide.

BUILDING CONSTRUCTION PROJECTS; RESIDENTIAL CONSTRUCTION PROJECTS (consisting of single family homes and apartments up to and including 4 stories); HEAVY AND HIGHWAY CONSTRUCTION PROJECTS AND DREDGING

Note: Under Executive Order (EO) 13658, an hourly minimum wage of \$10.95 for calendar year 2021 applies to all contracts subject to the Davis-Bacon Act for which the contract is awarded (and any solicitation was issued) on or after January 1, 2015. If this contract is covered by the EO, the contractor must pay all workers in any classification listed on this wage determination at least \$10.95 per hour (or the applicable wage rate listed on this wage determination, if it is higher) for all hours spent performing on the contract in calendar year 2021. If this contract is covered by the EO and a classification considered necessary for performance of work on the contract does not appear on this wage determination, the contractor must pay workers in that classification at least the wage rate determined through the conformance process set forth in 29 CFR 5.5(a)(1)(ii) (or the EO minimum wage rate, if it is higher than the conformed wage rate). The EO minimum wage rate will be adjusted annually. Please note that this EO applies to the above-mentioned types of contracts entered into by the federal government that are subject to the Davis-Bacon Act itself, but it does not apply to contracts subject only to the Davis-Bacon Related Acts, including those set forth at 29 CFR 5.1(a)(2)-(60). Additional information on contractor requirements and worker protections under the EO is available at www.dol.gov/whd/govcontracts.

Modification Number	Publication Date
0	01/01/2021
1	01/08/2021
2	01/22/2021
3	02/12/2021
4	02/19/2021

* ASBE0132-001 08/30/2020

Rates Fringes

Asbestos Workers/Insulator
Includes application of
all insulating materials,

protective coverings,
 coatings and finishes to
 all types of mechanical
 systems. Also the
 application of
 firestopping material for
 wall openings and
 penetrations in walls,
 floors, ceilings and
 curtain walls.....\$ 41.90 25.65

 BOIL0627-005 01/01/2013

	Rates	Fringes
BOILERMAKER.....	\$ 35.20	27.35

 BRHI0001-001 08/31/2020

	Rates	Fringes
BRICKLAYER		
Bricklayers and Stonemasons.	\$ 45.95	29.59
Pointers, Caulkers and		
Weatherproofers.....	\$ 46.21	29.59

 BRHI0001-002 08/31/2020

	Rates	Fringes
Tile, Marble & Terrazzo Worker		
Terrazzo Base Grinders.....	\$ 41.69	28.11
Terrazzo Floor Grinders		
and Tenders.....	\$ 40.14	28.11
Tile, Marble and Terrazzo		
Workers.....	\$ 43.50	28.11

 CARP0745-001 08/31/2020

	Rates	Fringes
Carpenters:		
Carpenters; Hardwood Floor		
Layers; Patent Scaffold		
Erectors (14 ft. and		
over); Piledrivers;		
Pneumatic Nailers; Wood		
Shinglers and Transit		
and/or Layout Man.....	\$ 50.50	23.59
Millwrights and Machine		
Erectors.....	\$ 50.75	23.59
Power Saw Operators (2		
h.p. and over).....	\$ 50.65	23.59

 CARP0745-002 08/31/2020

	Rates	Fringes
--	-------	---------

Drywall and Acoustical
Workers and Lathers.....\$ 50.50 23.59

ELEC1186-001 08/23/2020

Rates Fringes

Electricians:

Cable Splicers.....\$ 56.71 31.16
Electricians.....\$ 51.55 29.58
Telecommunication worker...\$ 32.69 12.96

ELEC1186-002 08/23/2020

Rates Fringes

Line Construction:

Cable Splicers.....\$ 56.71 31.16
Groundmen/Truck Drivers....\$ 38.66 25.63
Heavy Equipment Operators...\$ 46.40 28.00
Linemen.....\$ 51.55 29.58
Telecommunication worker...\$ 32.69 12.96

ELEV0126-001 01/01/2021

Rates Fringes

ELEVATOR MECHANIC.....\$ 63.18 35.825+a+b

a. VACATION: Employer contributes 8% of basic hourly rate for 5 years service and 6% of basic hourly rate for 6 months to 5 years service as vacation pay credit.

b. PAID HOLIDAYS: New Year's Day, Memorial Day, Independence Day, Labor Day, Veterans' Day, Thanksgiving Day, the Friday after Thanksgiving Day and Christmas Day.

ENGI0003-002 09/03/2018

Rates Fringes

Diver (Aqua Lung) (Scuba))

Diver (Aqua Lung) (Scuba)
(over a depth of 30 feet)...\$ 66.00 31.26

Diver (Aqua Lung) (Scuba)
(up to a depth of 30 feet)..\$ 56.63 31.26

Stand-by Diver (Aqua Lung)
(Scuba).....\$ 47.25 31.26

Diver (Other than Aqua Lung)

Diver (Other than Aqua
Lung).....\$ 66.00 31.26

Diver Tender (Other than
Aqua Lung).....\$ 44.22 31.26

Stand-by Diver (Other than
Aqua Lung).....\$ 47.25 31.26

Helicopter Work

Airborne Hoist Operator for Helicopter.....	\$ 45.80	31.26
Co-Pilot of Helicopter.....	\$ 45.98	31.26
Pilot of Helicopter.....	\$ 46.11	31.26

Power equipment operator -
tunnel work

GROUP 1.....	\$ 42.24	31.26
GROUP 2.....	\$ 42.35	31.26
GROUP 3.....	\$ 42.52	31.26
GROUP 4.....	\$ 42.79	31.26
GROUP 5.....	\$ 43.10	31.26
GROUP 6.....	\$ 43.75	31.26
GROUP 7.....	\$ 44.07	31.26
GROUP 8.....	\$ 44.18	31.26
GROUP 9.....	\$ 44.29	31.26
GROUP 9A.....	\$ 44.52	31.26
GROUP 10.....	\$ 44.58	31.26
GROUP 10A.....	\$ 44.73	31.26
GROUP 11.....	\$ 44.88	31.26
GROUP 12.....	\$ 45.24	31.26
GROUP 12A.....	\$ 45.60	31.26

Power equipment operators:

GROUP 1.....	\$ 41.94	31.26
GROUP 2.....	\$ 42.05	31.26
GROUP 3.....	\$ 42.22	31.26
GROUP 4.....	\$ 42.49	31.26
GROUP 5.....	\$ 42.80	31.26
GROUP 6.....	\$ 43.45	31.26
GROUP 7.....	\$ 43.77	31.26
GROUP 8.....	\$ 43.88	31.26
GROUP 9.....	\$ 43.99	31.26
GROUP 9A.....	\$ 44.22	31.26
GROUP 10.....	\$ 44.28	31.26
GROUP 10A.....	\$ 44.43	31.26
GROUP 11.....	\$ 44.58	31.26
GROUP 12.....	\$ 44.94	31.26
GROUP 12A.....	\$ 45.30	31.26
GROUP 13.....	\$ 42.22	31.26
GROUP 13A.....	\$ 42.49	31.26
GROUP 13B.....	\$ 42.80	31.26
GROUP 13C.....	\$ 43.45	31.26
GROUP 13D.....	\$ 43.77	31.26
GROUP 13E.....	\$ 43.88	31.26

POWER EQUIPMENT OPERATORS CLASSIFICATIONS

GROUP 1: Fork Lift (up to and including 10 tons); Partsman (heavy duty repair shop parts room when needed).

GROUP 2: Conveyor Operator (Handling building material); Hydraulic Monitor; Mixer Box Operator (Concrete Plant).

GROUP 3: Brakeman; Deckhand; Fireman; Oiler; Oiler/Gradechecker; Signalman; Switchman; Highline Cableway Signalman; Bargeman; Bunkerman; Concrete Curing Machine (self-propelled, automatically applied unit on streets,

highways, airports and canals); Leveeman; Roller (5 tons and under); Tugger Hoist.

GROUP 4: Boom Truck or dual purpose "A" Frame Truck (5 tons or less); Concrete Placing Boom (Building Construction); Dinky Operator; Elevator Operator; Hoist and/or Winch (one drum); Straddle Truck (Ross Carrier, Hyster and similar).

GROUP 5: Asphalt Plant Fireman; Compressors, Pumps, Generators and Welding Machines ("Bank" of 9 or more, individually or collectively); Concrete Pumps or Pumpcrete Guns; Lubrication and Service Engineer (Grease Rack); Screedman.

GROUP 6: Boom Truck or Dual Purpose "A" Frame Truck (over 5 tons); Combination Loader/Backhoe (up to and including 3/4 cu. yd.); Concrete Batch Plants (wet or dry); Concrete Cutter, Groover and/or Grinder (self-propelled unit on streets, highways, airports, and canals); Conveyor or Concrete Pump (Truck or Equipment Mounted); Drilling Machinery (not to apply to waterliners, wagon drills or jack hammers); Fork Lift (over 10 tons); Loader (up to and including 3 and 1/2 cu. yds); Lull High Lift (under 40 feet); Lubrication and Service Engineer (Mobile); Maginnis Internal Full Slab Vibrator (on airports, highways, canals and warehouses); Man or Material Hoist; Mechanical Concrete Finisher (Large Clary, Johnson Bidwell, Bridge Deck and similar); Mobile Truck Crane Driver; Portable Shotblast Concrete Cleaning Machine; Portable Boring Machine (under streets, highways, etc.); Portable Crusher; Power Jumbo Operator (setting slip forms, etc., in tunnels); Rollers (over 5 tons); Self-propelled Compactor (single engine); Self-propelled Pavement Breaker; Skidsteer Loader with attachments; Slip Form Pumps (Power driven by hydraulic, electric, air, gas, etc., lifting device for concrete forms); Small Rubber Tired Tractors; Trencher (up to and including 6 feet); Underbridge Personnel Aerial Platform (50 feet of platform or less).

GROUP 7: Crusher Plant Engineer, Dozer (D-4, Case 450, John Deere 450, and similar); Dual Drum Mixer, Extend Lift; Hoist and/or Winch (2 drums); Loader (over 3 and 1/2 cu. yds. up to and including 6 yards.); Mechanical Finisher or Spreader Machine (asphalt), (Barber Greene and similar) (Screedman required); Mine or Shaft Hoist; Mobile Concrete Mixer (over 5 tons); Pipe Bending Machine (pipelines only); Pipe Cleaning Machine (tractor propelled and supported); Pipe Wrapping Machine (tractor propelled and supported); Roller Operator (Asphalt); Self-Propelled Elevating Grade Plane; Slusher Operator; Tractor (with boom) (D-6, or similar); Trencher (over 6 feet and less than 200 h.p.); Water Tanker (pulled by Euclids, T-Pulls, DW-10, 20 or 21, or similar); Winchman (Stern Winch on Dredge).

GROUP 8: Asphalt Plant Operator; Barge Mate (Seagoing); Cast-in-Place Pipe Laying Machine; Concrete Batch Plant (multiple units); Conveyor Operator (tunnel); Deckmate;

Dozer (D-6 and similar); Finishing Machine Operator (airports and highways); Gradesetter; Kolman Loader (and similar); Mucking Machine (Crawler-type); Mucking Machine (Conveyor-type); No-Joint Pipe Laying Machine; Portable Crushing and Screening Plant; Power Blade Operator (under 12); Saurman Type Dragline (up to and including 5 yds.); Stationary Pipe Wrapping, Cleaning and Bending Machine; Surface Heater and Planer Operator, Tractor (D-6 and similar); Tri-Batch Paver; Tunnel Badger; Tunnel Mole and/or Boring Machine Operator Underbridge Personnel Aerial Platform (over 50 feet of platform).

GROUP 9: Combination Mixer and Compressor (gunite); Do-Mor Loader and Adams Elegrader; Dozer (D-7 or equal); Wheel and/or Ladder Trencher (over 6 feet and 200 to 749 h.p.).

GROUP 9A: Dozer (D-8 and similar); Gradesetter (when required by the Contractor to work from drawings, plans or specifications without the direct supervision of a foreman or superintendent); Push Cat; Scrapers (up to and including 20 cu. yds); Self-propelled Compactor with Dozer; Self-Propelled, Rubber-Tired Earthmoving Equipment (up to and including 20 cu. yds) (621 Band and similar); Sheep's Foot; Tractor (D-8 and similar); Tractors with boom (larger than D-6, and similar).

GROUP 10: Chicago Boom; Cold Planers; Heavy Duty Repairman or Welder; Hoist and/or Winch (3 drums); Hydraulic Skooper (Koehring and similar); Loader (over 6 cu. yds. up to and including 12 cu. yds.); Saurman type Dragline (over 5 cu. yds.); Self-propelled, rubber-tired Earthmoving Equipment (over 20 cu. yds. up to and including 31 cu. yds.) (637D and similar); Soil Stabilizer (P & H or equal); Sub-Grader (Gurries or other automatic type); Tractors (D-9 or equivalent, all attachments); Tractor (Tandem Scraper); Watch Engineer.

GROUP 10A: Boat Operator; Cable-operated Crawler Crane (up to and including 25 tons); Cable-operated Power Shovel, Clamshell, Dragline and Backhoe (up to and including 1 cu. yd.); Dozer D9-L; Dozer (D-10, HD41 and similar) (all attachments); Gradall (up to and including 1 cu. yd.); Hydraulic Backhoe (over 3/4 cu. yds. up to and including 2 cu. yds.); Mobile Truck Crane Operator (up to and including 25 tons) (Mobile Truck Crane Driver Required); Self-propelled Boom Type Lifting Device (Center Mount) (up to and including 25 tons) (Grove, Drott, P&H, Pettibone and similar); Trencher (over 6 feet and 750 h.p. or more); Watch Engineer (steam or electric).

GROUP 11: Automatic Slip Form Paver (concrete or asphalt); Band Wagon (in conjunction with Wheel Excavator); Cable-operated Crawler Cranes (over 25 tons but less than 50 tons); Cable-operated Power Shovel, Clamshell, Dragline and Backhoe (over 1 cu. yd. up to 7 cu. yds.); Gradall (over 1 cu. yds. up to 7 cu. yds.); DW-10, 20, etc. (Tandem); Earthmoving Machines (multiple propulsion power

units and 2 or more Scrapers) (up to and including 35 cu. yds., "" struck"" m.r.c.); Highline Cableway; Hydraulic Backhoe (over 2 cu. yds. up to and including 4 cu. yds.); Leverman; Lift Slab Machine; Loader (over 12 cu. yds); Master Boat Operator; Mobile Truck Crane Operator (over 25 tons but less than 50 tons); (Mobile Truck Crane Driver required); Pre-stress Wire Wrapping Machine; Self-propelled Boom-type Lifting Device (Center Mount) (over 25 tons m.r.c); Self-propelled Compactor (with multiple-propulsion power units); Single Engine Rubber Tired Earthmoving Machine (with Tandem Scraper); Tandem Cats; Trencher (pulling attached shield).

GROUP 12: Clamshell or Dipper Operator; Derricks; Drill Rigs; Multi-Propulsion Earthmoving Machines (2 or more Scrapers) (over 35 cu. yds ""struck""m.r.c.); Operators (Derricks, Piledrivers and Cranes); Power Shovels and Draglines (7 cu. yds. m.r.c. and over); Self-propelled rubber-tired Earthmoving equipment (over 31 cu. yds.) (657B and similar); Wheel Excavator (up to and including 750 cu. yds. per hour); Wheel Excavator (over 750 cu. yds. per hour).

GROUP 12A: Dozer (D-11 or similar or larger); Hydraulic Excavators (over 4 cu. yds.); Lifting cranes (50 tons and over); Pioneering Dozer/Backhoe (initial clearing and excavation for the purpose of providing access for other equipment where the terrain worked involves 1-to-1 slopes that are 50 feet in height or depth, the scope of this work does not include normal clearing and grubbing on usual hilly terrain nor the excavation work once the access is provided); Power Blade Operator (Cat 12 or equivalent or over); Straddle Lifts (over 50 tons); Tower Crane, Mobile; Traveling Truss Cranes; Universal, Liebherr, Linden, and similar types of Tower Cranes (in the erection, dismantling, and moving of equipment there shall be an additional Operating Engineer or Heavy Duty Repairman); Yo-Yo Cat or Dozer.

GROUP 13: Truck Driver (Utility, Flatbed, etc.)

GROUP 13A: Dump Truck, 8 cu.yds. and under (water level); Water Truck (up to and including 2,000 gallons).

GROUP 13B: Water Truck (over 2,000 gallons); Tandem Dump Truck, over 8 cu. yds. (water level).

GROUP 13C: Truck Driver (Semi-trailer. Rock Cans, Semi-Dump or Roll-Offs).

GROUP 13D: Truck Driver (Slip-In or Pup).

GROUP 13E: End Dumps, Unlicensed (Euclid, Mack, Caterpillar or similar); Tractor Trailer (Hauling Equipment); Tandem Trucks hooked up to Trailer (Hauling Equipment)

BOOMS AND/OR LEADS (HOURLY PREMIUMS):

The Operator of a crane (under 50 tons) with a boom of 80 feet or more (including jib), or of a crane (under 50 tons) with leads of 100 feet or more, shall receive a per hour premium for each hour worked on said crane (under 50 tons) in accordance with the following schedule:

Booms of 80 feet up to but not including 130 feet or Leads of 100 feet up to but not including 130 feet	0.50
Booms and/or Leads of 130 feet up to but not including 180 feet	0.75
Booms and/or Leads of 180 feet up to and including 250 feet	1.15
Booms and/or Leads over 250 feet	1.50

The Operator of a crane (50 tons and over) with a boom of 180 feet or more (including jib) shall receive a per hour premium for each hour worked on said crane (50 tons and over) in accordance with the following schedule:

Booms of 180 feet up to and including 250 feet	1.25
Booms over 250 feet	1.75

ENGI0003-004 09/04/2017

	Rates	Fringes
Dredging: (Boat Operators)		
Boat Deckhand.....	\$ 41.22	30.93
Boat Operator.....	\$ 43.43	30.93
Master Boat Operator.....	\$ 43.58	30.93
Dredging: (Clamshell or Dipper Dredging)		
GROUP 1.....	\$ 43.94	30.93
GROUP 2.....	\$ 43.28	30.93
GROUP 3.....	\$ 42.88	30.93
GROUP 4.....	\$ 41.22	30.93
Dredging: (Derricks)		
GROUP 1.....	\$ 43.94	30.93
GROUP 2.....	\$ 43.28	30.93
GROUP 3.....	\$ 42.88	30.93
GROUP 4.....	\$ 41.22	30.93
Dredging: (Hydraulic Suction Dredges)		
GROUP 1.....	\$ 43.58	30.93
GROUP 2.....	\$ 43.43	30.93
GROUP 3.....	\$ 43.28	30.93
GROUP 4.....	\$ 43.22	30.93
GROUP 5.....	\$ 37.88	26.76
Group 5.....	\$ 42.88	30.93
GROUP 6.....	\$ 37.77	26.76
Group 6.....	\$ 42.77	30.93
GROUP 7.....	\$ 36.22	26.76

Group 7.....\$ 41.22 30.93

CLAMSHELL OR DIPPER DREDGING CLASSIFICATIONS

- GROUP 1: Clamshell or Dipper Operator.
- GROUP 2: Mechanic or Welder; Watch Engineer.
- GROUP 3: Barge Mate; Deckmate.
- GROUP 4: Bargeman; Deckhand; Fireman; Oiler.

HYDRAULIC SUCTION DREDGING CLASSIFICATIONS

- GROUP 1: Leverman.
- GROUP 2: Watch Engineer (steam or electric).
- GROUP 3: Mechanic or Welder.
- GROUP 4: Dozer Operator.
- GROUP 5: Deckmate.
- GROUP 6: Winchman (Stern Winch on Dredge)
- GROUP 7: Deckhand (can operate anchor scow under direction of Deckmate); Fireman; Leveeman; Oiler.

DERRICK CLASSIFICATIONS

- GROUP 1: Operators (Derricks, Piledrivers and Cranes).
- GROUP 2: Saurman Type Dragline (over 5 cubic yards).
- GROUP 3: Deckmate; Saurman Type Dragline (up to and including 5 yards).
- GROUP 4: Deckhand, Fireman, Oiler.

ENGI0003-044 09/03/2018

	Rates	Fringes
Power Equipment Operators (PAVING)		
Asphalt Concrete Material Transfer.....	\$ 42.92	32.08
Asphalt Plant Operator.....	\$ 43.35	32.08
Asphalt Raker.....	\$ 41.96	32.08
Asphalt Spreader Operator...\$	43.44	32.08
Cold Planer.....	\$ 43.75	32.08
Combination Loader/Backhoe (over 3/4 cu.yd.).....	\$ 41.96	32.08
Combination Loader/Backhoe (up to 3/4 cu.yd.).....	\$ 40.98	32.08
Concrete Saws and/or Grinder (self-propelled unit on streets, highways, airports and canals).....	\$ 42.92	32.08
Grader.....	\$ 43.75	32.08
Laborer, Hand Roller.....	\$ 41.46	32.08
Loader (2 1/2 cu. yds. and under).....	\$ 42.92	32.08
Loader (over 2 1/2 cu. yds. to and including 5 cu. yds.).....	\$ 43.24	32.08
Roller Operator (five tons		

and under).....\$ 41.69	32.08
Roller Operator (over five tons).....\$ 43.12	32.08
Screed Person.....\$ 42.92	32.08
Soil Stabilizer.....\$ 43.75	32.08

IRON0625-001 09/01/2020

	Rates	Fringes
Ironworkers:.....\$ 42.50		36.84
a. Employees will be paid \$.50 per hour more while working in tunnels and coffer dams; \$1.00 per hour more when required to work under or are covered with water (submerged) and when they are required to work on the summit of Mauna Kea, Mauna Loa or Haleakala.		

LAB00368-001 09/02/2020

	Rates	Fringes
Laborers:		
Driller.....\$ 39.70		22.68
Final Clean Up.....\$ 29.65		18.17
Gunite/Shotcrete Operator and High Scaler.....\$ 39.20		22.68
Laborer I.....\$ 38.70		22.68
Laborer II.....\$ 36.10		22.68
Mason Tender/Hod Carrier...\$ 39.20		22.68
Powderman.....\$ 39.70		22.68
Window Washer (bosun chair).\$ 38.20		22.68

LABORERS CLASSIFICATIONS

Laborer I: Air Blasting run by electric or pneumatic compressor; Asphalt Laborer, Ironer, Raker, Luteman, and Handroller, and all types of Asphalt Spreader Boxes; Asphalt Shoveler; Assembly and Installation of Multiplates, Liner Plates, Rings, Mesh, Mats; Batching Plant (portable and temporary); Boring Machine Operator (under streets and sidewalks); Buggymobile; Burning and Welding; Chainsaw, Faller, Logloader, and Bucker; Compactors (Jackson Jumping Jack and similar); Concrete Bucket Dumpman; Concrete Chipping; Concrete Chuteman/Hoseman (pouring concrete) (the handling of the chute from ready-mix trucks for such jobs as walls, slabs, decks, floors, foundations, footings, curbs, gutters, and sidewalks); Concrete Core Cutter (Walls, Floors, and Ceiling); Concrete Grinding or Sanding; Concrete: Hooking on, signaling, dumping of concrete for treme work over water on caissons, pilings, abutments, etc.; Concrete: Mixing, handling, conveying, pouring, vibrating, otherwise placing of concrete or aggregates or by any other process; Concrete: Operation of motorized wheelbarrows or buggies or machines of similar character, whether run by gas, diesel, or electric power; Concrete Placement Machine Operator: operation of Somero Hammerhead, Copperheads, or similar machines; Concrete Pump Machine

(laying, coupling, uncoupling of all connections and cleaning of equipment); Concrete and/or Asphalt Saw (Walking or Handtype) (cutting walls or flatwork) (scoring old or new concrete and/or asphalt) (cutting for expansion joints) (streets and ways for laying of pipe, cable or conduit for all purposes); Concrete Shovelers/Laborers (Wet or Dry); Concrete Screeding for Rough Strike-Off: Rodding or striking-off, by hand or mechanical means prior to finishing; Concrete Vibrator Operator; Coring Holes: Walls, footings, piers or other obstructions for passage of pipes or conduits for any purpose and the pouring of concrete to secure the hole; Cribbers, Shorer, Lagging, Sheeting, and Trench Jacking and Bracing, Hand-Guided Lagging Hammer Whaling Bracing; Curbing (Concrete and Asphalt); Curing of Concrete (impervious membrane and form oiler) mortar and other materials by any mode or method; Cut Granite Curb Setter (setting, leveling and grouting of all precast concrete or stone curbs); Cutting and Burning Torch (demolition); Dri Pak-It Machine; Environmental Abatement: removal of asbestos, lead, and bio hazardous materials (EPA and/or OSHA certified); Falling, bucking, yarding, loading or burning of all trees or timber on construction site; Forklift (9 ft. and under); Gas, Pneumatic, and Electric tools; Grating and Grill work for drains or other purposes; Green Cutter of concrete or aggregate in any form, by hand, mechanical means, grindstone or air and/or water; Grout: Spreading for any purpose; Guinea Chaser (Grade Checker) for general utility trenches, sitework, and excavation; Headerboard Man (Asphalt or Concrete); Heat Welder of Plastic (Laborers' AGC certified workers) (when work involves waterproofing for waterponds, artificial lakes and reservoir) heat welding for sewer pipes and fusion of HDPE pipes; Heavy Highway Laborer (Rigging, signaling, handling, and installation of pre-cast catch basins, manholes, curbs and gutters); High Pressure Nozzleman - Hydraulic Monitor (over 100# pressure); Jackhammer Operator; Jacking of slip forms: All semi and unskilled work connected therewithin; Laying of all multi-cell conduit or multi-purpose pipe; Magnesite and Mastic Workers (Wet or Dry)(including mixer operator);Mortar Man; Mortar Mixer (Block, Brick, Masonry, and Plastering); Nozzleman (Sandblasting and/or Water Blasting): handling, placing and operation of nozzle; Operation, Manual or Hydraulic jacking of shields and the use of such other mechanical equipment as may be necessary; Pavement Breakers; Paving, curbing and surfacing of streets, ways, courts, under and overpasses, bridges, approaches, slope walls, and all other labor connected therewith; Pilecutters; Pipe Accessment in place, bolting and lining up of sectional metal or other pipe including corrugated pipe; Pipelayer performing all services in the laying and installation of pipe from the point of receiving pipe in the ditch until completion of operation, including any and all forms of tubular material, whether pipe, HDPE, metallic or non-metallic, conduit, and any other stationary-type of tubular device used for conveying of any substance or element, whether water, sewage, solid, gas, air, or other product whatsoever and without regard to the

nature of material from which tubular material is fabricated; No-joint pipe and stripping of same, Pipewrapper, Caulker, Bander, Kettlemen, and men applying asphalt, Laykold, treating Creosote and similar-type materials (6-inch) pipe and over); Piping: resurfacing and paving of all ditches in preparation for laying of all pipes; Pipe laying of lateral sewer pipe from main or side sewer to buildings or structure (except Contactor may direct work be done under proper supervision); Pipe laying, leveling and marking of the joint used for main or side sewers and storm sewers; Laying of all clay, terra cotta, ironstone, vitrified concrete, HDPE or other pipe for drainage; Placing and setting of water mains, gas mains and all pipe including removal of skids; Plaster Mortar Mixer/Pump; Pneumatic Impact Wrench; Portable Sawmill Operation: Choker setters, off bearers, and lumber handlers connected with clearing; Posthole Digger (Hand Held, Gas, Air and Electric); Powderman's Tender; Power Broom Sweepers (Small); Preparation and Compaction of roadbeds for railroad track laying, highway construction, and the preparation of trenches, footings, etc., for cross-country transmission by pipelines, electrical transmission or underground lines or cables (by mechanical means); Raising of structure by manual or hydraulic jacks or other methods and resetting of structure in new locations, including all concrete work; Ramming or compaction; Rigging in connection with Laborers' work (except demolition), Signaling (including the use of walkie talkie) Choke Setting, tag line usage; Tagging and Signaling of building materials into high rise units; Riprap, Stonepaver, and Rock Slinger (includes placement of stacked concrete, wet or dry and loading, unloading, signaling, slinging and setting of other similar materials); Rotary Scarifier (including multiple head concrete chipping Scarifier); Salamander Heater, Drying of plaster, concrete mortar or other aggregate; Scaffold Erector Leadman; Scaffolds: (Swing and hanging) including maintenance thereof; Scaler; Septic Tank/Cesspool and Drain Fields Digger and Installer; Shredder/Chipper (tree branches, brush, etc.); Stripping and Setting Forms; Stripping of Forms: Other than panel forms which are to be re-used in their original form, and stripping of forms on all flat arch work; Tampers (Barko, Wacker, and similar type); Tank Scaler and Cleaners; Tarman; Tree Climbers and Trimmers; Trencher (includes hand-held, Davis T-66 and similar type); Trucks (flatbed up to and including 2 1/2 tons when used in connection with on-site Laborers' work; Trucks (Refuse and Garbage Disposal) (from job site to dump); Vibra-Screed (Bull Float in connection with Laborers' work); Well Points, Installation of or any other dewatering system.

Laborer II: Asphalt Plant Laborer; Boring Machine Tender; Bridge Laborer; Burning of all debris (crates, boxes, packaging waste materials); Chainman, Rodmen, and Grade Markers; Cleaning, clearing, grading and/or removal for streets, highways, roadways, aprons, runways, sidewalks, parking areas, airports, approaches, and other similar

installations; Cleaning or reconditioning of streets, ways, sewers and waterlines, all maintenance work and work of an unskilled and semi-skilled nature; Concrete Bucket Tender (Groundman) hooking and unhooking of bucket; Concrete Forms; moving, cleaning, oiling and carrying to the next point of erection of all forms; Concrete Products Plant Laborers; Conveyor Tender (conveying of building materials); Crushed Stone Yards and Gravel and Sand Pit Laborers and all other similar plants; Demolition, Wrecking and Salvage Laborers: Wrecking and dismantling of buildings and all structures, with use of cutting or wrecking tools, breaking away, cleaning and removal of all fixtures, All hooking, unhooking, signaling of materials for salvage or scrap removed by crane or derrick; Digging under streets, roadways, aprons or other paved surfaces; Driller's Tender; Chuck Tender, Outside Nipper; Dry-packing of concrete (plugging and filling of she-bolt holes); Fence and/or Guardrail Erector: Dismantling and/or re-installation of all fence; Finegrader; Firewatcher; Flagman (Coning, preparing, stablishing and removing portable roadway barricade devices); Signal Men on all construction work defined herein, including Traffic Control Signal Men at construction site; General Excavation; Backfilling, Grading and all other labor connected therewith; Digging of trenches, ditches and manholes and the leveling, grading and other preparation prior to laying pipe or conduit for any purpose; Excavations and foundations for buildings, piers, foundations and holes, and all other construction. Preparation of street ways and bridges; General Laborer: Cleaning and Clearing of all debris and surplus material. Clean-up of right-of-way. Clearing and slashing of brush or trees by hand or mechanical cutting. General Clean up: sweeping, cleaning, wash-down, wiping of construction facility and equipment (other than "Light Clean up (Janitorial) Laborer. Garbage and Debris Handlers and Cleaners. Appliance Handling (job site) (after delivery unloading in storage area); Ground and Soil Treatment Work (Pest Control); Gunite/Shotcrete Operator Tender; Junk Yard Laborers (same as Salvage Yard); Laser Beam "Target Man" in connection with Laborers' work; Layout Person for Plastic (when work involves waterproofing for waterponds, artificial lakes and reservoirs); Limbers, Brush Loaders, and Pilers; Loading, Unloading, carrying, distributing and handling of all rods and material for use in reinforcing concrete construction (except when a derrick or outrigger operated by other than hand power is used); Loading, unloading, sorting, stockpiling, handling and distribution of water mains, gas mains and all pipes; Loading and unloading of all materials, fixtures, furnishings and appliances from point of delivery to stockpile to point of installation; hooking and signaling from truck, conveyance or stockpile; Material Yard Laborers; Pipelayer Tender; Pipewrapper, Caulker, Bander, Kettlemen, and men applying asphalt, Laykold, Creosote, and similar-type materials (pipe under 6 inches); Plasterer Laborer; Preparation, construction and maintenance of roadbeds and sub-grade for all paving, including excavation, dumping, and spreading of

sub-grade material; Prestressed or precast concrete slabs, walls, or sections: all loading, unloading, stockpiling, hooking on of such slabs, walls or sections; Quarry Laborers; Railroad, Streetcar, and Rail Transit Maintenance and Repair; Roustabout; Rubbish Trucks in connection with Building Construction Projects (excluding clearing, grubbing, and excavating); Salvage Yard: All work connected with cutting, cleaning, storing, stockpiling or handling of materials, all cleanup, removal of debris, burning, back-filling and landscaping of the site; Sandblasting Tender (Pot Tender): Hoses and pots or markers; Scaffolds: Erection, planking and removal of all scaffolds used for support for lathers, plasters, brick layers, masons, and other construction trades crafts; Scaffolds: (Specially designed by carpenters) laborers shall tend said carpenter on erection and dismantling thereof, preparation for foundation or mudsills, maintenance; Scraping of floors; Screeds: Handling of all screeds to be reused; handling, dismantling and conveyance of screeds; Setting, leveling and securing or bracing of metal or other road forms and expansion joints; Sheeting Piling/trench shoring (handling and placing of skip sheet or wood plank trench shoring); Ship Scalers; Shipwright Tender; Sign Erector (subdivision traffic, regulatory, and street-name signs); Sloper; Slurry Seal Crews (Mixer Operator, Applicator, Squeegee Man, Shuttle Man, Top Man); Snapping of wall ties and removal of tie rods; Soil Test operations of semi and unskilled labor such as filling sand bags; Striper (Asphalt, Concrete or other Paved Surfaces); Tool Room Attendant (Job Site); Traffic Delineating Device Applicator; Underpinning, lagging, bracing, propping and shoring, loading, signaling, right-of-way clearance along the route of movement, The clearance of new site, excavation of foundation when moving a house or structure from old site to new site; Utilities employees; Water Man; Waterscape/Hardscape Laborers; Wire Mesh Pulling (all concrete pouring operations); Wrecking, stripping, dismantling and handling concrete forms an false work.

 LAB00368-002 09/01/2020

	Rates	Fringes
Landscape & Irrigation Laborers		
GROUP 1.....	\$ 26.40	14.25
GROUP 2.....	\$ 27.40	14.25
GROUP 3.....	\$ 21.70	14.25

LABORERS CLASSIFICATIONS

GROUP 1: Installation of non-potable permanent or temporary irrigation water systems performed for the purposes of Landscaping and Irrigation architectural horticultural work; the installation of drinking fountains and permanent or temporary irrigation systems using potable water for

Landscaping and Irrigation architectural horticultural purposes only. This work includes (a) the installation of all heads, risers, valves, valve boxes, vacuum breakers (pressure and non-pressure), low voltage electrical lines and, provided such work involves electrical wiring that will carry 24 volts or less, the installation of sensors, master control panels, display boards, junction boxes, conductors, including all other components for controllers, (b) and metallic (copper, brass, galvanized, or similar) pipe, as well as PVC or other plastic pipe including all work incidental thereto, i.e., unloading, handling and distribution of all pipes fittings, tools, materials and equipment, (c) all soldering work in connection with the above whether done by torch, soldering iron, or other means; (d) tie-in to main lines, thrust blocks (both precast and poured in place), pipe hangers and supports incidental to installation of the entire irrigation system, (e) making of pressure tests, start-up testing, flushing, purging, water balancing, placing into operation all irrigation equipment, fixtures and appurtenances installed under this agreement, and (f) the fabrication, replacement, repair and servicing of landscaping and irrigation systems. Operation of hand-held gas, air, electric, or self-powered tools and equipment used in the performance of Landscape and Irrigation work in connection with architectural horticulture; Choke-setting, signaling, and rigging for equipment operators on job-site in the performance of such Landscaping and Irrigation work; Concrete work (wet or dry) performed in connection with such Landscaping and Irrigation work. This work shall also include the setting of rock, stone, or riprap in connection with such Landscape, Waterscape, Rockscape, and Irrigation work; Grubbing, pick and shovel excavation, and hand rolling or tamping in connection with the performance of such Landscaping and Irrigation work; Sprigging, handseeding, and planting of trees, shrubs, ground covers, and other plantings and the performance of all types of gardening and horticultural work relating to said planting; Operation of flat bed trucks (up to and including 2 1/2 tons).:

GROUP 2. Layout of irrigation and other non-potable irrigation water systems and the layout of drinking fountains and other potable irrigation water systems in connection with such Landscaping and Irrigation work. This includes the layout of all heads, risers, valves, valve boxes, vacuum breakers, low voltage electrical lines, hydraulic and electrical controllers, and metallic (coppers, brass, galvanized, or similar) pipe, as well as PVC or other plastic pipe. This work also includes the reading and interpretation of plans and specifications in connection with the layout of Landscaping, Rockscape, Waterscape, and Irrigation work; Operation of Hydro-Mulching machines (sprayman and driver), Drillers, Trenchers (riding type, Davis T-66, and similar) and fork lifts used in connection with the performance of such Landscaping and Irrigation work; Tree climbers and chain saw tree trimmers, Sporadic operation (when used in

connection with Landscaping, Rockscape, Waterscape, and Irrigation work) of Skid-Steer Loaders (Bobcat and similar), Cranes (Bantam, Grove, and similar), Hoptos, Backhoes, Loaders, Rollers, and Dozers (Case, John Deere, and similar), Water Trucks, Trucks requiring a State of Hawaii Public Utilities Commission Type 5 and/or type 7 license, sit-down type and "gang" mowers, and other self-propelled, sit-down operated machines not listed under Landscape & Irrigation Maintenance Laborer; Chemical spraying using self-propelled power spraying equipment (200 gallon capacity or more).

GROUP 3: Maintenance of trees, shrubs, ground covers, lawns and other planted areas, including the replanting of trees, shrubs, ground covers, and other plantings that did not "take" or which are damaged; provided, however, that re-planting that requires the use of equipment, machinery, or power tools shall be paid for at the rate of pay specified under Landscape and Irrigation Laborer, Group 1; Raking, mowing, trimming, and runing, including the use of "weed eaters", hedge trimmers, vacuums, blowers, and other hand-held gas, air, electric, or self-powered tools, and the operation of lawn mowers (Note: The operation of sit-down type and "gang" mowers shall be paid for at the rate of pay specified under Landscape & Irrigation Laborer, Group 2); Guywiring, staking, propping, and supporting trees; Fertilizing, Chemical spraying using spray equipment with less than 200 gallon capacity, Maintaining irrigation and sprinkler systems, including the staking, clamping, and adjustment of risers, and the adjustment and/or replacement of sprinkler heads, (Note: the cleaning and gluing of pipe and fittings shall be paid for at the rate of pay specified under Landscape & Irrigation Laborer(Group 1); Watering by hand or sprinkler system and the performance of other types of gardening, yardman, and horticultural-related work.

LAB00368-003 09/02/2020

	Rates	Fringes
Underground Laborer		
GROUP 1.....	\$ 39.30	22.68
GROUP 2.....	\$ 40.80	22.68
GROUP 3.....	\$ 41.30	22.68
GROUP 4.....	\$ 42.30	22.68
GROUP 5.....	\$ 42.65	22.68
GROUP 6.....	\$ 42.90	22.68
GROUP 7.....	\$ 43.35	22.68

GROUP 1: Watchmen; Change House Attendant.

GROUP 2: Swamper; Brakeman; Bull Gang-Muckers, Trackmen; Dumpmen (any method); Concrete Crew (includes rodding and spreading); Grout Crew; Reboundmen

GROUP 3: Chucktenders and Cabletenders; Powderman (Prime

House); Vibratorman, Pavement Breakers

GROUP 4: Miners - Tunnel (including top and bottom man on shaft and raise work); Timberman, Retimberman (wood or steel or substitute materials thereof); Blasters, Drillers, Powderman (in heading); Microtunnel Laborer; Headman; Cherry Pickerman (where car is lifted); Nipper; Grout Gunmen; Grout Pumpman & Potman; Gunite, Shotcrete Gunmen & Potmen; Concrete Finisher (in tunnel); Concrete Screed Man; Bit Grinder; Steel Form Raisers & Setters; High Pressure Nozzleman; Nozzleman (on slick line); Sandblaster-Potman (combination work assignment interchangeable); Tugger

GROUP 5: Shaft Work & Raise (below actual or excavated ground level); Diamond Driller; Gunite or Shotcrete Nozzleman; Rodman; Groundman

GROUP 6: Shifter

GROUP 7: Shifter (Shaft Work & Raiser)

PAIN1791-001 01/01/2021

	Rates	Fringes
Painters:		
Brush.....	\$ 38.90	30.09
Sandblaster; Spray.....	\$ 38.90	30.09

PAIN1889-001 07/01/2020

	Rates	Fringes
Glaziers.....	\$ 39.50	34.85

PAIN1926-001 03/03/2020

	Rates	Fringes
Soft Floor Layers.....	\$ 36.65	31.29

PAIN1944-001 01/05/2020

	Rates	Fringes
Taper.....	\$ 43.10	29.90

PLAS0630-001 09/02/2019

	Rates	Fringes
PLASTERER.....	\$ 42.64	30.58

PLAS0630-002 09/02/2019

	Rates	Fringes
--	-------	---------

Cement Masons:

Cement Masons.....	\$ 41.10	30.68
Trowel Machine Operators....	\$ 41.25	30.68

PLUM0675-001 01/03/2021

Rates Fringes

Plumber, Pipefitter, Steamfitter & Sprinkler Fitter...	\$ 47.73	28.25
---	----------	-------

ROOF0221-001 09/06/2020

Rates Fringes

Roofers (Including Built Up, Composition and Single Ply).....	\$ 41.80	20.50
--	----------	-------

SHEE0293-001 09/02/2018

Rates Fringes

Sheet metal worker.....	\$ 42.55	27.44
-------------------------	----------	-------

SUHI1997-002 09/15/1997

Rates Fringes

Drapery Installer.....	\$ 13.60	1.20
------------------------	----------	------

FENCE ERECTOR (Chain Link Fence).....	\$ 9.33	1.65
--	---------	------

WELDERS - Receive rate prescribed for craft performing operation to which welding is incidental.

=====

Note: Executive Order (EO) 13706, Establishing Paid Sick Leave for Federal Contractors applies to all contracts subject to the Davis-Bacon Act for which the contract is awarded (and any solicitation was issued) on or after January 1, 2017. If this contract is covered by the EO, the contractor must provide employees with 1 hour of paid sick leave for every 30 hours they work, up to 56 hours of paid sick leave each year. Employees must be permitted to use paid sick leave for their own illness, injury or other health-related needs, including preventive care; to assist a family member (or person who is like family to the employee) who is ill, injured, or has other health-related needs, including preventive care; or for reasons resulting from, or to assist a family member (or person who is like family to the employee) who is a victim of, domestic violence, sexual assault, or stalking. Additional information on contractor requirements and worker protections under the EO is available at www.dol.gov/whd/govcontracts.

Unlisted classifications needed for work not included within the scope of the classifications listed may be added after award only as provided in the labor standards contract clauses (29CFR 5.5 (a) (1) (ii)).

The body of each wage determination lists the classification and wage rates that have been found to be prevailing for the cited type(s) of construction in the area covered by the wage determination. The classifications are listed in alphabetical order of ""identifiers"" that indicate whether the particular rate is a union rate (current union negotiated rate for local), a survey rate (weighted average rate) or a union average rate (weighted union average rate).

Union Rate Identifiers

A four letter classification abbreviation identifier enclosed in dotted lines beginning with characters other than ""SU"" or ""UAVG"" denotes that the union classification and rate were prevailing for that classification in the survey. Example: PLUM0198-005 07/01/2014. PLUM is an abbreviation identifier of the union which prevailed in the survey for this classification, which in this example would be Plumbers. 0198 indicates the local union number or district council number where applicable, i.e., Plumbers Local 0198. The next number, 005 in the example, is an internal number used in processing the wage determination. 07/01/2014 is the effective date of the most current negotiated rate, which in this example is July 1, 2014.

Union prevailing wage rates are updated to reflect all rate changes in the collective bargaining agreement (CBA) governing this classification and rate.

Survey Rate Identifiers

Classifications listed under the ""SU"" identifier indicate that no one rate prevailed for this classification in the survey and the published rate is derived by computing a weighted average rate based on all the rates reported in the survey for that classification. As this weighted average rate includes all rates reported in the survey, it may include both union and non-union rates. Example: SULA2012-007 5/13/2014. SU indicates the rates are survey rates based on a weighted average calculation of rates and are not majority rates. LA indicates the State of Louisiana. 2012 is the year of survey on which these classifications and rates are based. The next number, 007 in the example, is an internal number used in producing the wage determination. 5/13/2014 indicates the survey completion date for the classifications and rates under that identifier.

Survey wage rates are not updated and remain in effect until a

new survey is conducted.

Union Average Rate Identifiers

Classification(s) listed under the UAVG identifier indicate that no single majority rate prevailed for those classifications; however, 100% of the data reported for the classifications was union data. EXAMPLE: UAVG-OH-0010 08/29/2014. UAVG indicates that the rate is a weighted union average rate. OH indicates the state. The next number, 0010 in the example, is an internal number used in producing the wage determination. 08/29/2014 indicates the survey completion date for the classifications and rates under that identifier.

A UAVG rate will be updated once a year, usually in January of each year, to reflect a weighted average of the current negotiated/CBA rate of the union locals from which the rate is based.

WAGE DETERMINATION APPEALS PROCESS

1.) Has there been an initial decision in the matter? This can be:

- * an existing published wage determination
- * a survey underlying a wage determination
- * a Wage and Hour Division letter setting forth a position on a wage determination matter
- * a conformance (additional classification and rate) ruling

On survey related matters, initial contact, including requests for summaries of surveys, should be with the Wage and Hour Regional Office for the area in which the survey was conducted because those Regional Offices have responsibility for the Davis-Bacon survey program. If the response from this initial contact is not satisfactory, then the process described in 2.) and 3.) should be followed.

With regard to any other matter not yet ripe for the formal process described here, initial contact should be with the Branch of Construction Wage Determinations. Write to:

Branch of Construction Wage Determinations
Wage and Hour Division
U.S. Department of Labor
200 Constitution Avenue, N.W.
Washington, DC 20210

2.) If the answer to the question in 1.) is yes, then an interested party (those affected by the action) can request review and reconsideration from the Wage and Hour Administrator (See 29 CFR Part 1.8 and 29 CFR Part 7). Write to:

Wage and Hour Administrator
U.S. Department of Labor
200 Constitution Avenue, N.W.
Washington, DC 20210

The request should be accompanied by a full statement of the interested party's position and by any information (wage payment data, project description, area practice material, etc.) that the requestor considers relevant to the issue.

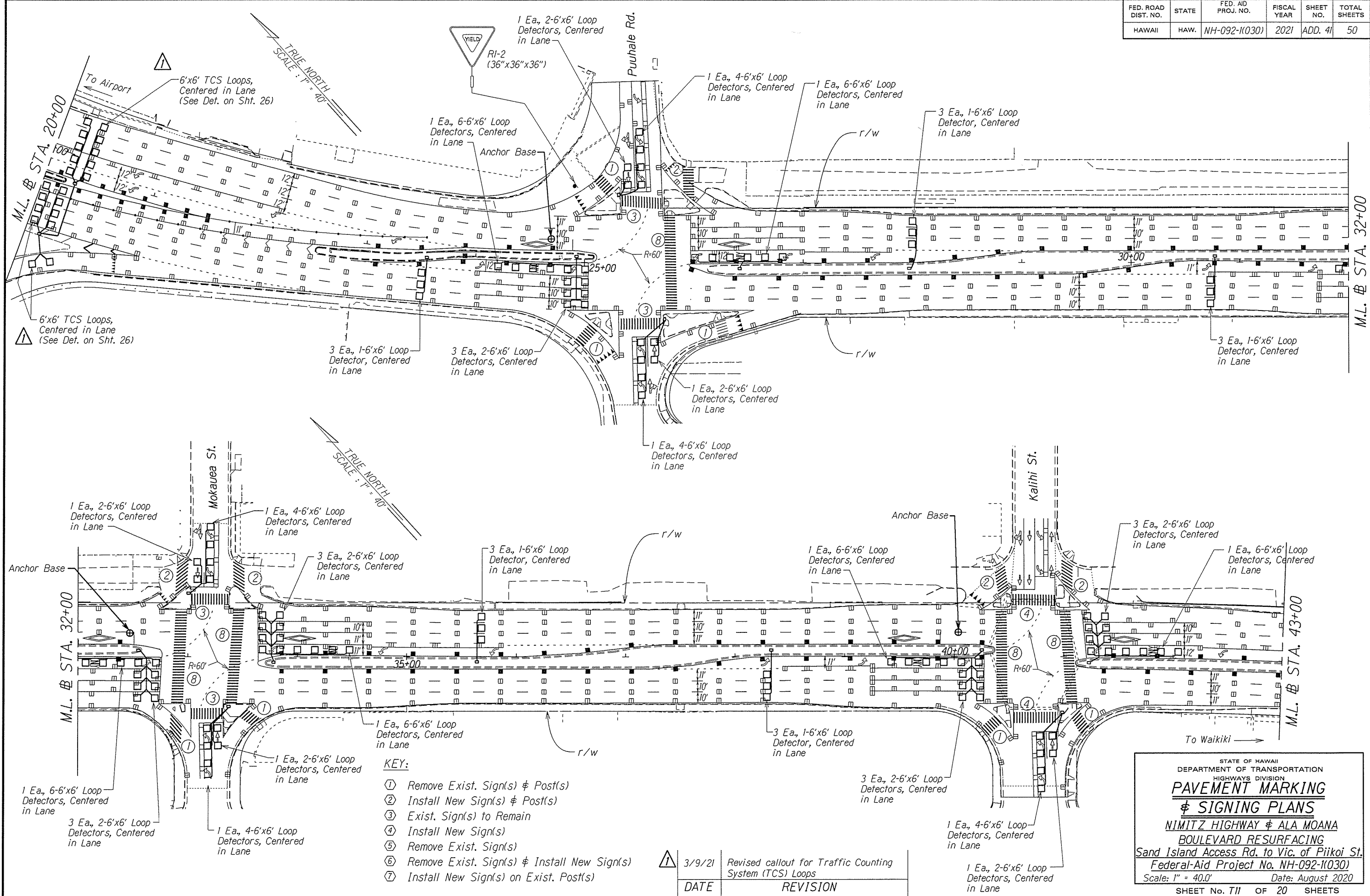
3.) If the decision of the Administrator is not favorable, an interested party may appeal directly to the Administrative Review Board (formerly the Wage Appeals Board). Write to:

Administrative Review Board
U.S. Department of Labor
200 Constitution Avenue, N.W.
Washington, DC 20210

4.) All decisions by the Administrative Review Board are final.

=====

END OF GENERAL DECISION"



SURVEY PLOTTED BY	DATE
DRAWN BY	
DESIGNED BY	
QUANTITIES BY	
CHECKED BY	
ORIGINAL PLAN	
NOTE BOOK	
FILE NO.	
N.	

- KEY:**
- ① Remove Exist. Sign(s) & Post(s)
 - ② Install New Sign(s) & Post(s)
 - ③ Exist. Sign(s) to Remain
 - ④ Install New Sign(s)
 - ⑤ Remove Exist. Sign(s)
 - ⑥ Remove Exist. Sign(s) & Install New Sign(s)
 - ⑦ Install New Sign(s) on Exist. Post(s)

DATE	3/9/21	Revised callout for Traffic Counting System (TCS) Loops
		REVISION

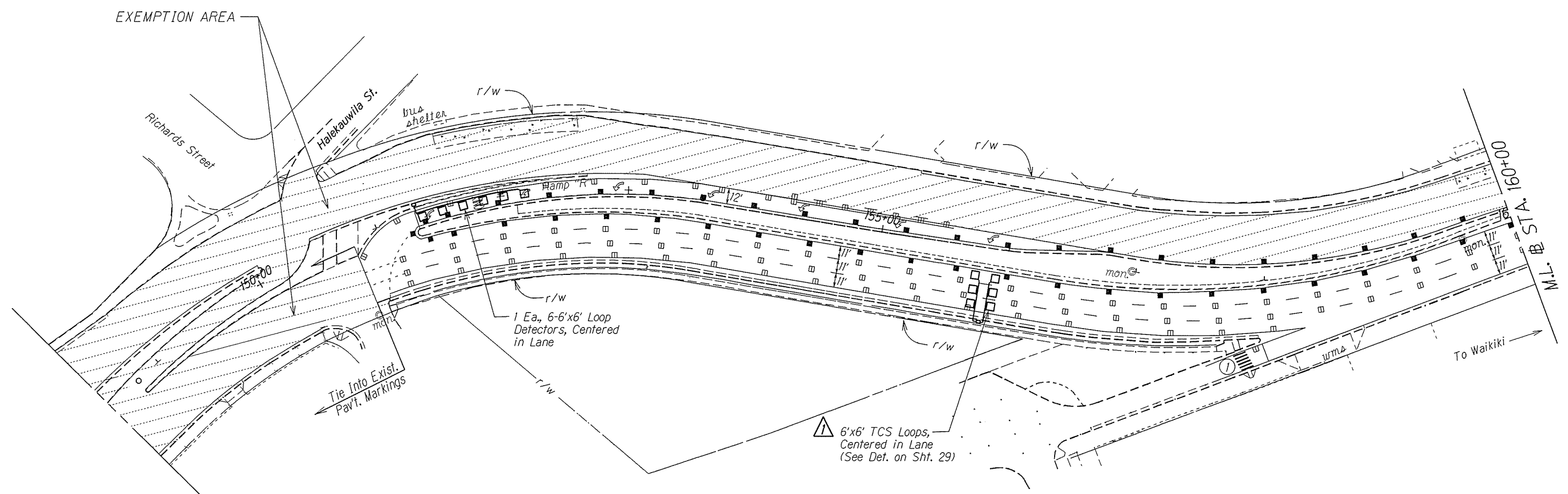
STATE OF HAWAII
DEPARTMENT OF TRANSPORTATION
HIGHWAYS DIVISION

**PAVEMENT MARKING
& SIGNING PLANS**

NIMITZ HIGHWAY & ALA MOANA
BOULEVARD RESURFACING
Sand Island Access Rd. to Vic. of Piikoi St.
Federal-Aid Project No. NH-092-1(030)
Scale: 1" = 40.0' Date: August 2020

SHEET No. 711 OF 20 SHEETS

FED. ROAD DIST. NO.	STATE	FED. AID PROJ. NO.	FISCAL YEAR	SHEET NO.	TOTAL SHEETS
HAWAII	HAW.	NH-092-1(030)	2021	ADD. 46	50



SURVEY PLOTTED BY	DATE
DRAWN BY	
DESIGNED BY	
QUANTITIES BY	
CHECKED BY	
ORIGINAL PLAN	
NOTE BOOK	
No.	

	3/9/21	Revised Callout for Traffic Counting System (TCS) Loops
	DATE	REVISION
STATE OF HAWAII DEPARTMENT OF TRANSPORTATION HIGHWAYS DIVISION PAVEMENT MARKING & SIGNING PLANS NIMITZ HIGHWAY & ALA MOANA BOULEVARD RESURFACING Sand Island Access Rd. to Vic. of Piikoi St. Federal-Aid Project No. NH-092-1(030) Scale: 1" = 40.0' Date: August, 2020 SHEET No. T16 OF 20 SHEETS		

**STATE OF HAWAII
DEPARTMENT OF TRANSPORTATION
HIGHWAYS DIVISION**

**Project: NIMITZ HIGHWAY AND ALA MOANA BOULEVARD RESURFACING,
SAND ISLAND ACCESS ROAD TO VICINITY OF PIIKOI STREET
FEDERAL AID PROJECT NO. NH-092-1(030)**

Prospective bidders had emailed RFI's following answers given in Addendum No. 1. Questions and responses are as follows:

32. After reviewing Addendum No. 1, it seems that the quantity of item 631.5010 increased from 17 to 44. Can you please provide the locations, as this will affect production and traffic control set up for this work? There were not any additional locations called out on the plans.

Response:

For item 631.5010 Anchor Base for Portable Contra-flow Sign, we have no inventory of where the existing ones are. Basically the Contractor would replace (one-to-one) the existing anchor bases if they are disturbed. Final anchor base locations should be coordinated with the contraflow lane operator.

33. There is a pay item for Tubular Delineators 629.5010 - 17 Each, but there is no call out on the plan sheet for the location to be installed. Can you please provide the locations, as this will affect production and traffic control set up for this work?

Response:

While locations may vary, the majority of item 629.5010 Tubular Delineator (28-Inch High) should be on Nimitz Highway Eastbound along the contra-flow lane line and starting on the east side of Sand Island Access Road intersection.

34. Pay item 694.0100 Longitudinal Channelizing Curb System has quantity for 7 units, but drawing in both plan sheet and enlarged detail, there are 10 units. Can you please clarify?

Response:

The plan sheet correctly shows 10 units. See revised Proposal Schedule dated 3/9/2021, which changes item 694.0100 Approx. Quantity from 7 to 10.

35. The traffic counting system (TCS) work (Bid Items 621.1000 and 621.2000) are shown on sheets 14 and 20. However, on sheets 41 and 46 they are showing some of the TCS loops from sheets 14 & 20 (there are discrepancies on counts between the TCS and loop

drawings). The detector loop counts on the proposal match the loop counts on the loop plans which include the redundant TCS loops. Suggest you change the quantity for Bid Item 623.7051 Group of 1 detector loops from 129 to 105 each to correct this. The TCS loops shown on sheets 41 & 46 should also be confirmed/changed to the correct quantity and identified as TCS loops and not detector loops.

Response:

Plan sheets 14 and 20 show the correct number of loops and arrangement of the two TCS sites. See revised Plan Sheets No. ADD. 41 and ADD. 46 and revised Proposal Schedule dated r3/9/2021 for the corrected loop detector quantities.

36. For traffic counting system (TCS) work shown on sheet 14 and in more detail on sheet 26 the plans call for installing a Type B TS pullbox that appears to be intercepting existing conduit. However, looking on google street view there is no existing conduit and the TCS loops heading Ewa (Out Bound) are fed from wires placed directly in the AC and go to a pullbox on the Diamond Head (In-Bound) side of Nimitz Highway. Suggest you delete the Type B TS pullbox shown on the plans and have the TCS loops in the Ewa bound lanes reinstalled the same way as the existing.

Response:

No change will be made to the plans. Bid accordingly.

37. Please clarify "distinct and separate". This project requires trucking. On any given day, the project will use 30 trucks performing the exact same thing. None of the DBE truckers are big enough to supply the project with the need trucks. Therefore multiple trucking companies will need to be used. Would the contractor need to hire only DBE trucker and prevent the potential participation of other DBE truckers? Additionally, does "other providers" include traffic control companies, surveyors, quality control testing, profilograph testing, consultants, equipment mobilization, equipment maintenance, etc.? If these companies who provide a service are not available at the time the service is needed, will the contractor be able to use a different service provider?

Response:

It must be clear that any two subcontractors or other service providers listed on pages P-5 and P-6 will not be performing the same scope of work.

The contractor may hire both DBE and non-DBE trucking companies. Multiple DBE trucking companies may be used, as long as each DBE trucking company has a distinct and separate scope of work that they will be performing. However, HDOT recommends that a subcontract between one trucking company be considered, with the option for this trucking company to lease other DBE and non-DBE trucks.

"Other providers" may include non-licensed specialties.

If the companies are DBEs, please refer to the DBE Requirements – Section XI – Replacement of a DBE on a Project with a Contract Goal.

38. What other companies would this apply to that are not subcontractors, manufacturers or suppliers? Are all suppliers / manufacturers required to be listed or only DBE suppliers? If so, which section of P-6 shall service providers be listed.

Response:

Refer to HRS 103D.302 section which requires the listing of all subcontractors, suppliers, etc. that will be engaged with the bidder.

39. P-6 has three different sections: Joint contractor, Supplier, and manufacturer. If the contractor needs to list trucking companies and other service providers on this page, which section is it required to be listed under. The specifications prohibit the contractor from making changes to the form. If service providers “can be” listed on P-6, then is it a requirement to list it on P-6 instead of P-5? If a contractor does list a service provider on P-5 (because it’s not a requirement to list on P-6), would that service provider be treated as a “subcontractor” and subject to the subcontracting laws?

Response:

Trucking companies and service providers may be listed under the categories “Supplier” or “Manufacturer” on P-6. Include their Nature of Work (as it will be used to determine what type of service they will be providing) and indicate if they are a DBE.

40. If the State does not have accurate information on the extent of the overlaid gutter and cannot determine what work will be required so that that contractor can determine the quantity, scope, sequence, or means and methods, and will leave it up to the engineer to decide, can the state include a force account item for this work? We’ve seen projects where the asphalt on the gutter needs to be removed prior to the roadwork so that the condition of the gutter can be inspected. This has significant changes to how and when the contractor can do this work which is now left to the engineer to decide.

Response:

Added Force Account item 638.2000 Maintenance of Overlaid Gutter to the revised Proposal Schedule dated r3/9/2021.

41. Please define the unit of measure on Addendum No. 1 Proposal Schedule for item 694.0100 - Longitudinal Channelizing Curb system. The current unit of measure says “Unit”.

Response:

According to Special Provision Section 694 Longitudinal Channelizing Curb System, the pre-fabricated curb system is described as made up of modular curb units. The striping plan showed the modular curb unit as being 40" long x 8" wide. Each modular curb unit included the curb and the upright post/delineator. The method of measurement and payment will remain as per "Unit" as stated in Section 694.

42. If service providers are listed on P-6 under the Supplier section, will only 60% of the dollar amount be counted toward the DBE goal was will all other suppliers? How can the contractor indicate they are not a supplier if made to list in the supplier section?

Response:

The bidder should describe it in the nature of work section to clarify they are not a supplier but a service provider. Please refer to the DBE Requirements regarding how to calculate the DBE goal.

43. If multiple DBE truckers are not allowed to be listed, this will potentially exclude and hurt the opportunity for other DBE truckers to be used. Although the DBE requirements allow other truckers to be used under the listed trucker, the listed trucker has no obligation to actually use the 2nd DBE trucker and will instead use their own trucks. Please consider allowing the listing of multiple truckers to allow general contractors to be able to help more DBE trucking companies.

Response:

See response to question 37.

44. Other than the definition for subcontractor listed on spec page 101-10a, are there any other definitions the State will impose on the contractor?

Response:

No.

45. The traffic counting system (TCS) work is shown on sheets 14 and 20. However, on sheets 41 and 46 they are showing some (discrepancy on counts between the drawings) of the TCS loops as detector loops. The detector loops counts on the proposal match the loops on the plans including the redundant TCS loops. Suggest you delete 24 loops from Bid Item 623.7051 and also delete them from sheets 41 and 46 to correct this discrepancy.

Response:

See response to question 35.

46. Is the contractor restricted to only the trucking companies listed?

Response:

Refer to DBE Requirements Section VI. G. The guidelines are in place to ensure the respective truckers, performing specific category scopes of work, are able to meet the need by allowing the leasing of additional trucks. In addition, DBE credit is recognized accordingly. Therefore, if additional truckers within the respective categories are needed, each Trucker A or B should be able to expand their fleet accordingly without crossing categories.

47. If DBE Truckers have to be listed as Distinct and separate, will the DBE office count payments to a DBE trucker that performs a service not specifically listed? For example, DBE trucker "A" is listed for trucking asphalt and DBE Trucker "B" is listed for trucking cold planed material. Will the DBE dollars spent on DBE Trucker "B" be counted if they also truck asphalt?

Response:

Yes. Truckers can be counted as long as they perform a commercially useful function. The contractor must follow the Commercially Useful Function evaluation described in the DBE Requirements Section IV. F. Truckers must perform a commercially useful function. Truckers are not to be used on an on-call basis. Bidders may consider the use of leased trucks if their fleet is not large enough, but there is nothing in the regulations that state multiple truckers cannot be used for the same hauling services. It is a state contracting law that prohibits multiple subs doing the same scope of work.

48. If DBE Truckers have to be listed as Distinct and separate, will the DBE office count payments to a DBE trucker that performs a service not specifically listed? For example, DBE trucker "A" is listed for trucking asphalt and DBE Trucker "B" is listed for trucking cold planed material. Will the DBE dollars spent on DBE Trucker "B" be counted if they also truck asphalt?

Response:

See response to question 47.

49. Recon area total based on Plan Sheets 11 & 12 is 464,680 SF. This is would be about 4,300 CY of excavation and 8,900 Tons of ATB. Proposal quantities are 4,740 CY excavation and 9,970 Tons ATB. Please clarify the quantity differences.

Response:

Bid according to the quantities listed in the Proposal Schedule.